

UNISEX ROMPER SUIT



PROJECT DESIGN © LOVE PRODUCTIONS 2021
THIS DESIGN IS PROTECTED BY COPYRIGHT AND
MUST NOT BE MADE FOR RESALE.



Greetings dear sewing enthusiast,

Thank you for downloading our unisex romper suit pattern, which we trust will keep you occupied for a while and be worth the effort.

The pattern is sized to fit an average 9-to-12-month-old in order to give you the same challenge our lovely Sewing Bee competitors had to tackle – and it certainly gave them a good test!

Best of luck with making this practical and comfortable playsuit – they will make lovely gifts for toddlers.

Sew long for now!

The Great British Sewing Bee

UNISEX ROMPER SUIT PATTERN

PRINTING:

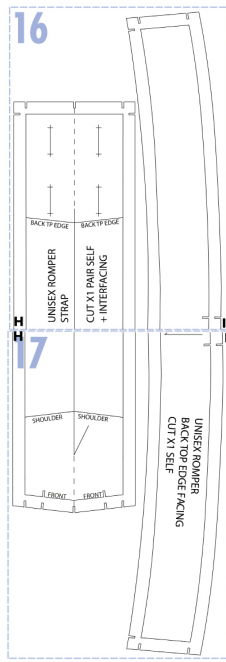
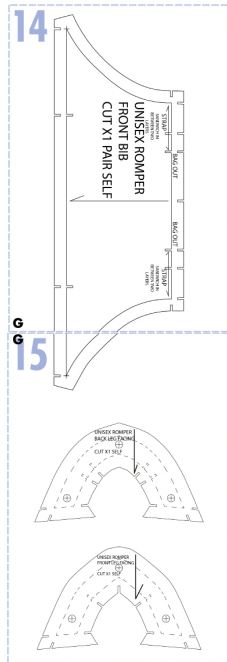
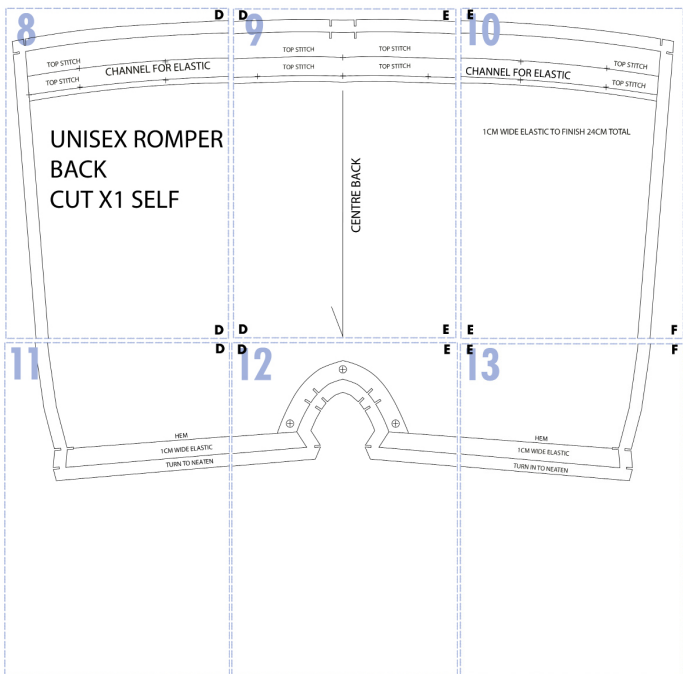
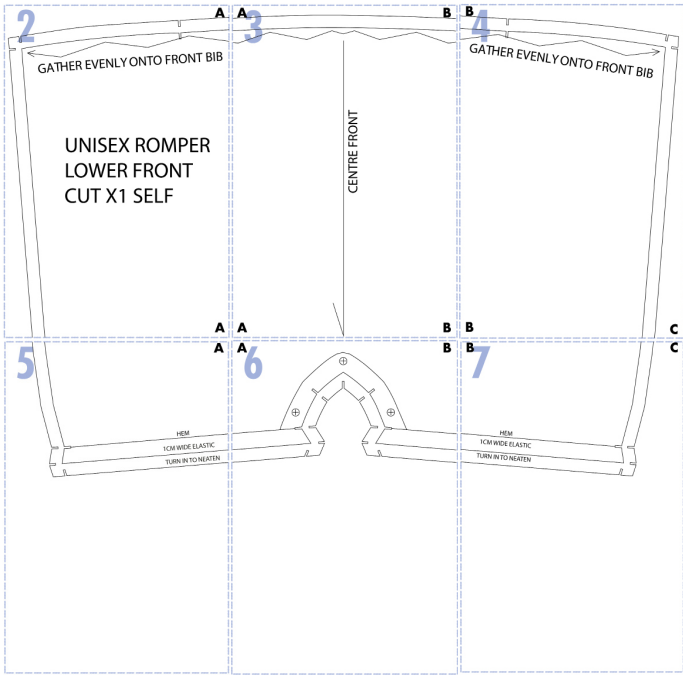
- ✗ In your print menu, under size options, please select ACTUAL SIZE, instead of FIT TO PAGE.
- ✗ Print on A4, single sided sheets.

INSTRUCTIONS:

- ✗ Measure and cut out your test square to ensure your measurements are correct.
- ✗ Cut around each piece, using the stitched border as the edge.
- ✗ Lay out all the pieces and line up the corresponding letter. (Use the layplan as a reference).
- ✗ Stick the correct pieces together.



PDF PATTERN LAYPLAN



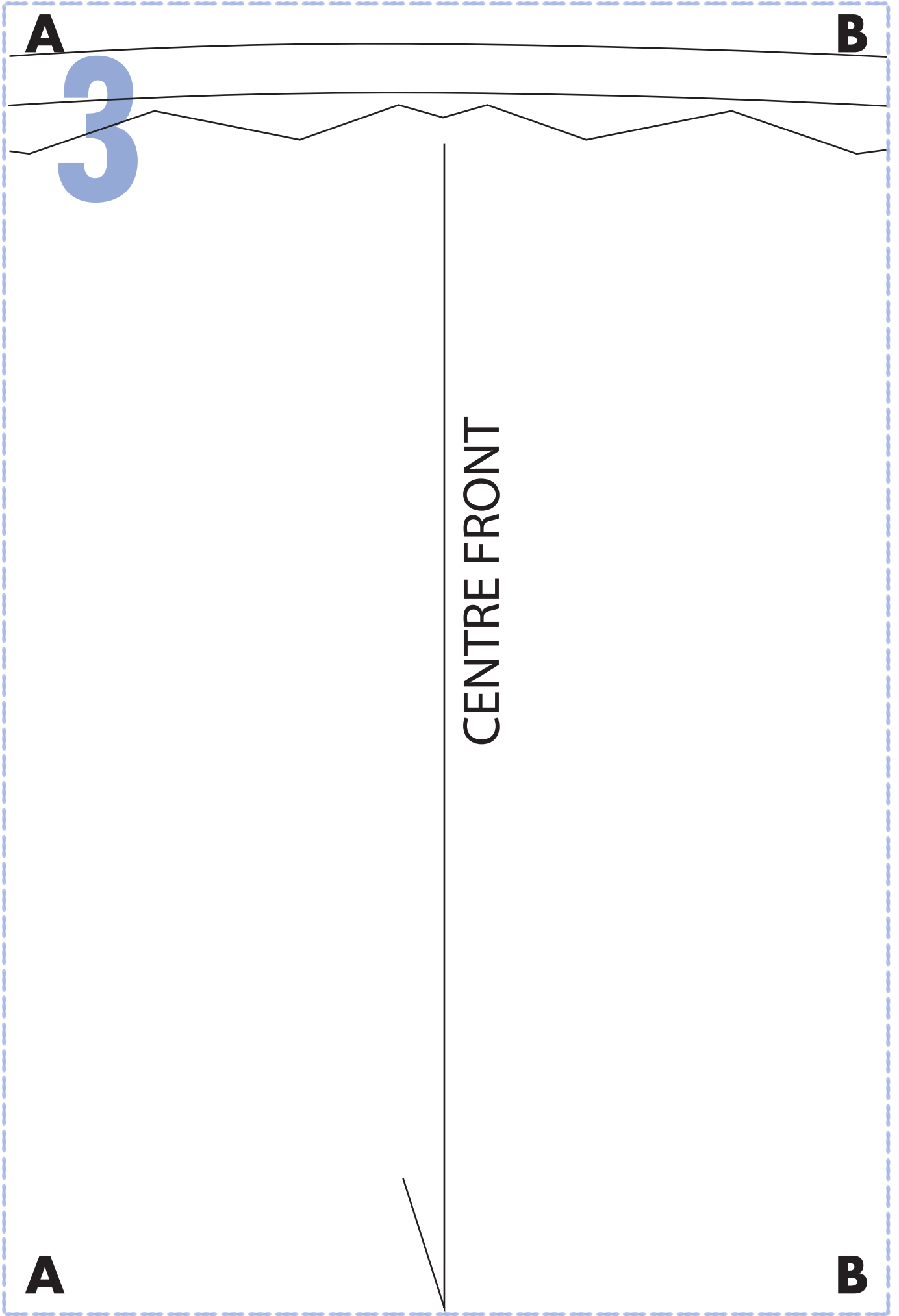
2

A

GATHER EVENLY ONTO FRONT BIB

**UNISEX ROMPER
LOWER FRONT
CUT X1 SELF**

A



B

4

GATHER EVENLY ONTO FRONT BIB

B

C

5

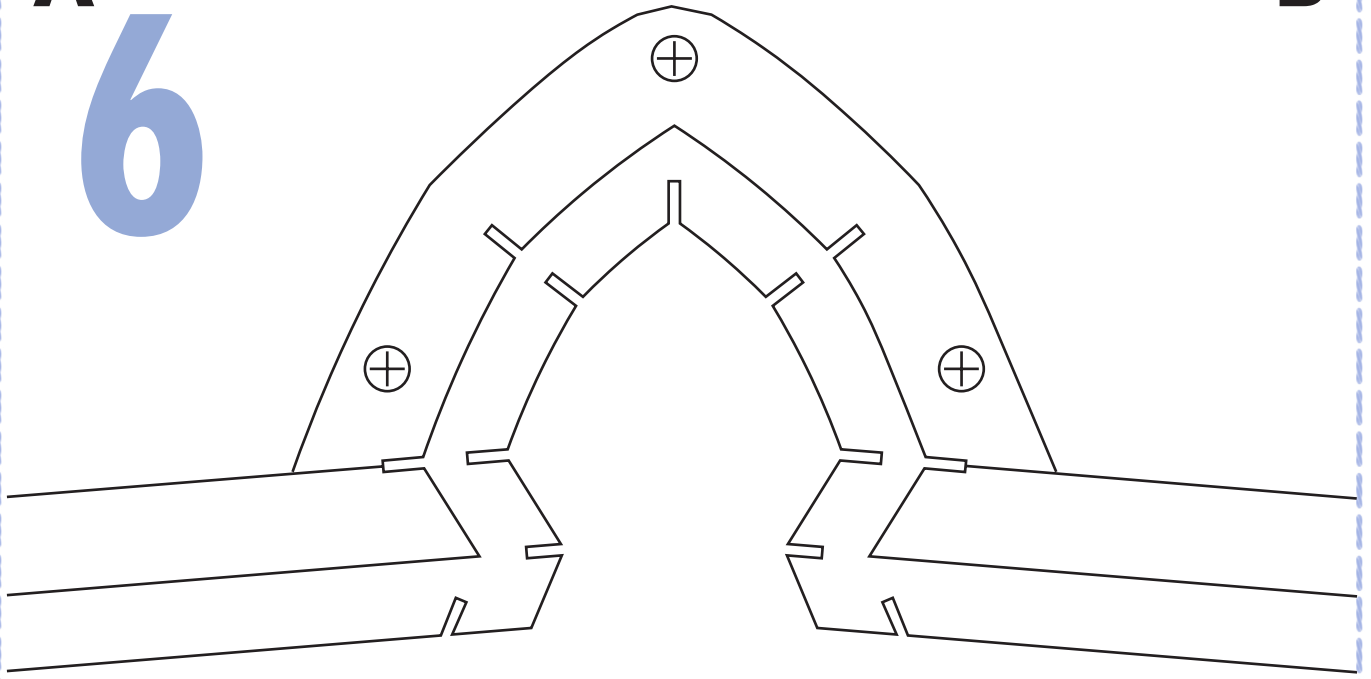
A



A

B

6



B

7

C

HEM

1CM WIDE ELASTIC

TURN IN TO NEATEN

8

D

TOP STITCH

TOP STITCH

CHANNEL FOR ELASTIC

UNISEX ROMPER
BACK

CUT X1 SELF

D



D

E

9

TOP STITCH

TOP STITCH

TOP STITCH

TOP STITCH

CENTRE BACK

D

E



E

10

CHANNEL FOR ELASTIC

TOP STITCH

TOP STITCH

1CM WIDE ELASTIC TO FINISH 24CM TOTAL

E

F



D

1

1

HEM

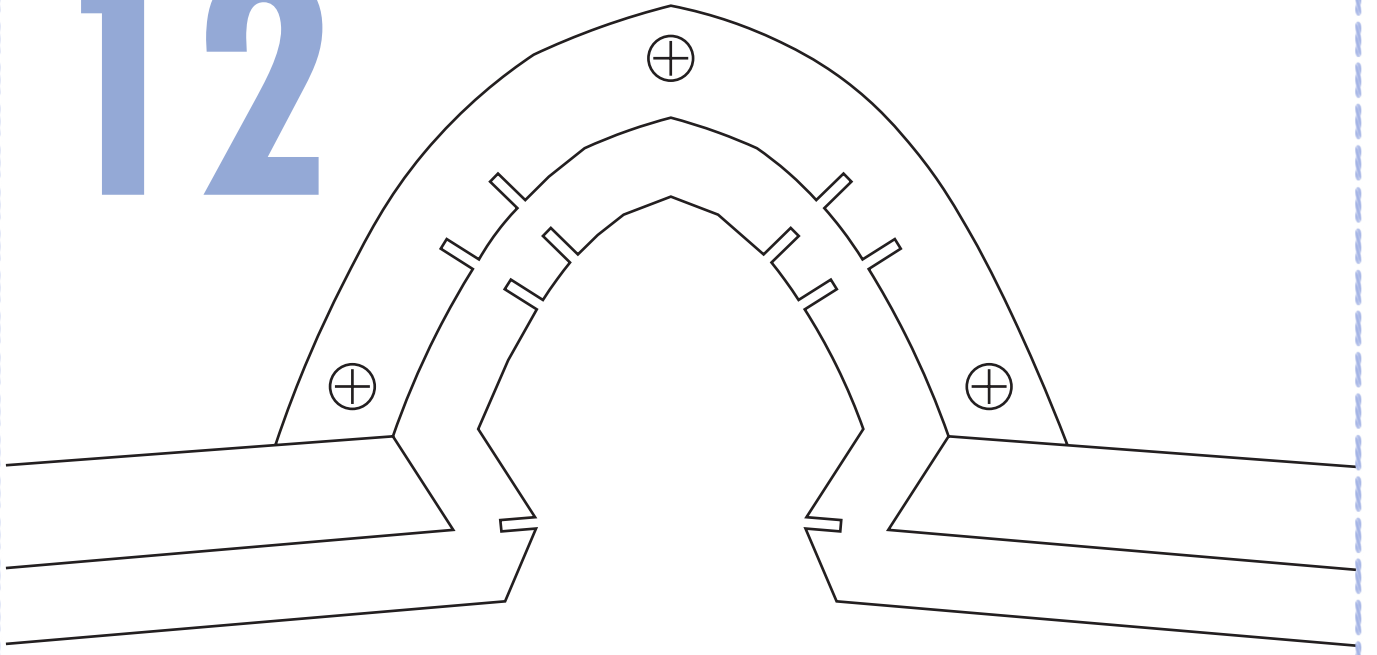
1CM WIDE ELASTIC

TURN TO NEATEN

D

E

12



E

13

F

HEM

1CM WIDE ELASTIC

TURN IN TO NEATEN



**UNISEX ROMPER
FRONT BIB
CUT X1 PAIR SELF**

STRAP
SANDWICH IN
BETWEEN TWO
LAYERS

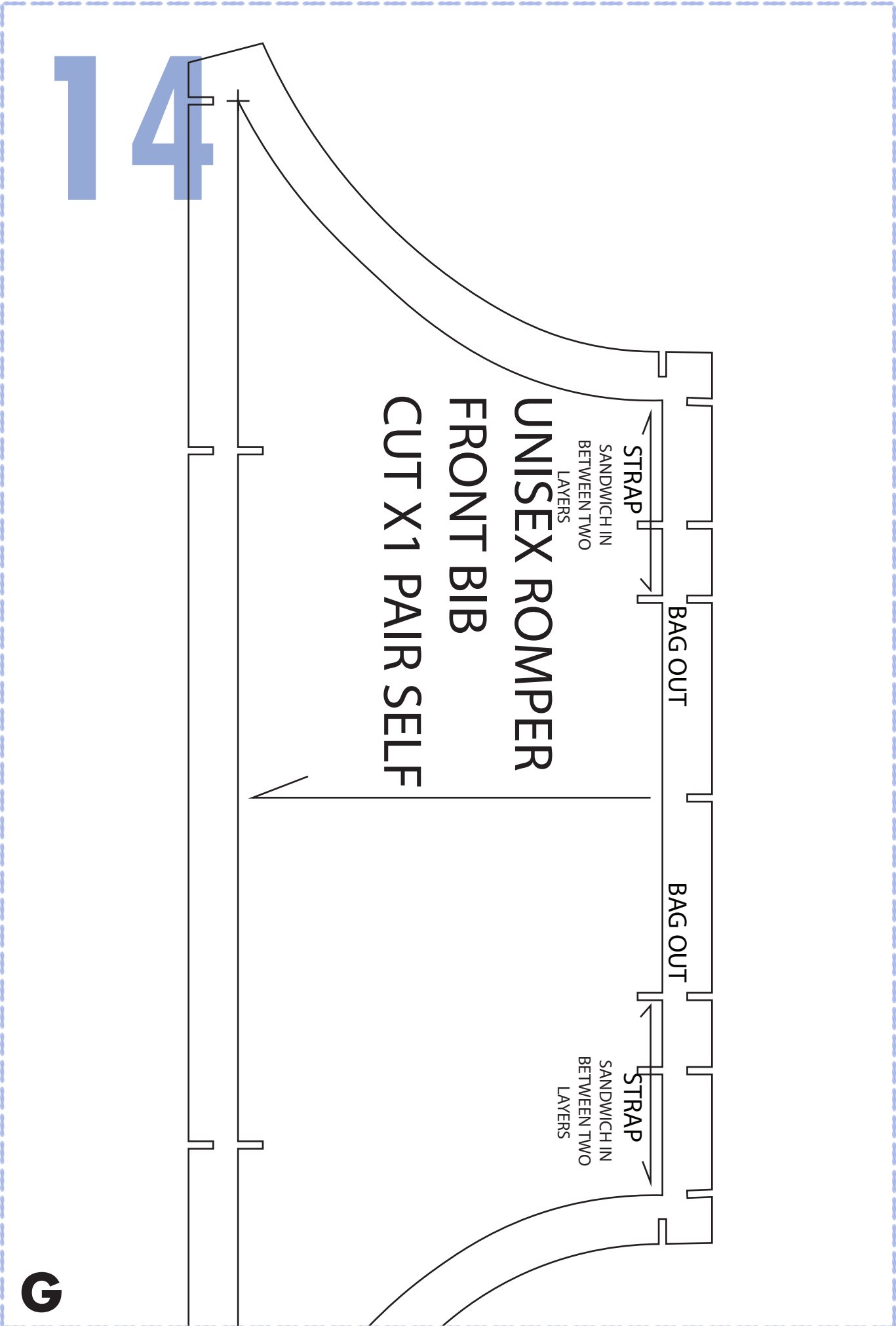
BAG OUT

BAG OUT

STRAP
SANDWICH IN
BETWEEN TWO
LAYERS

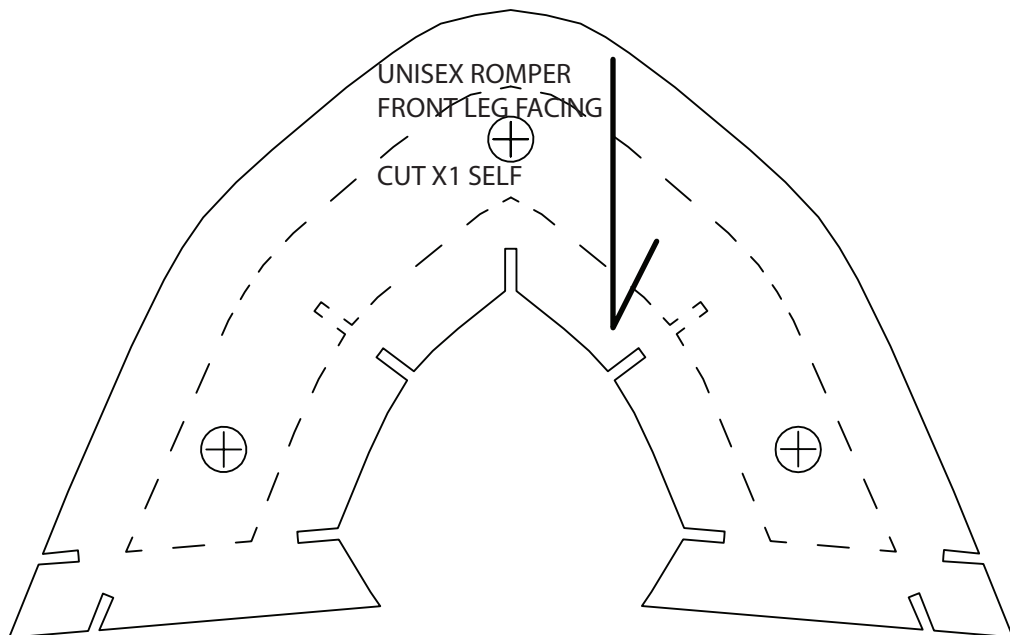
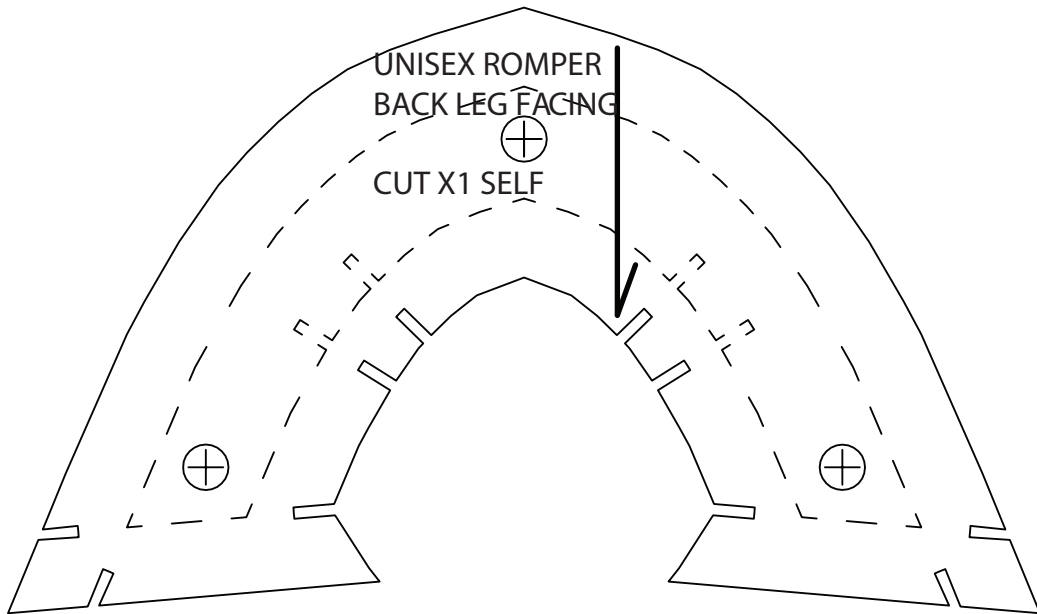
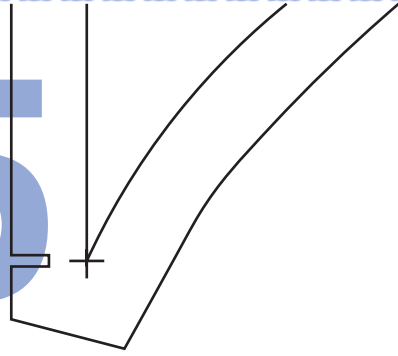
14

G

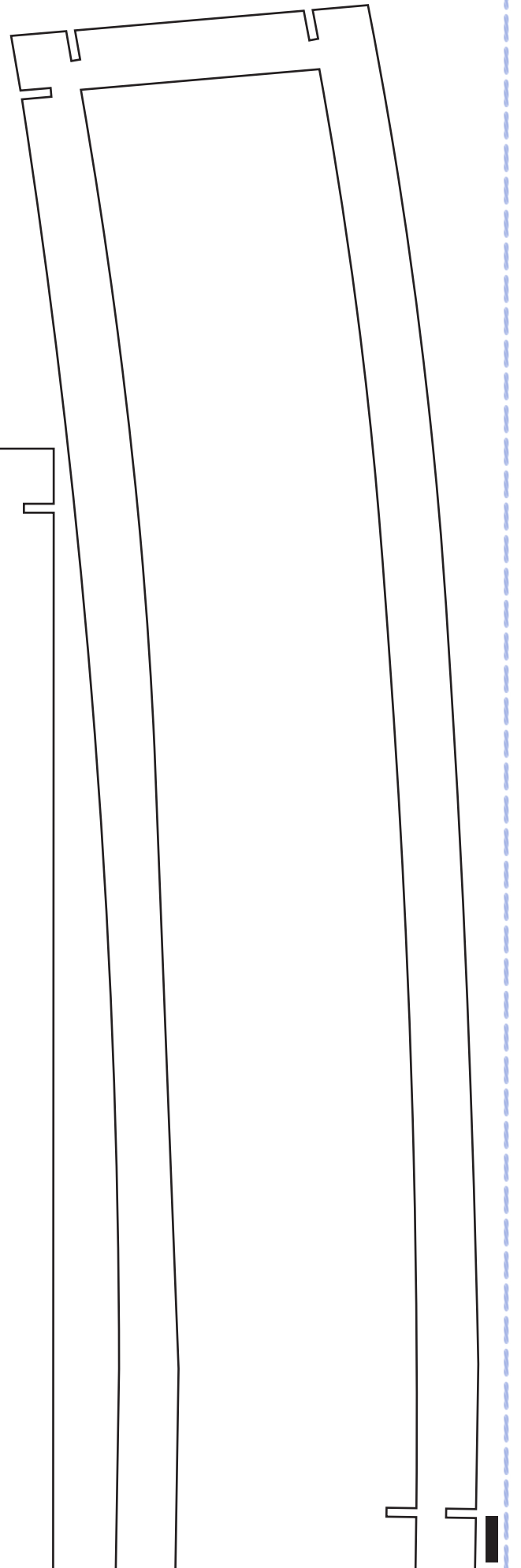
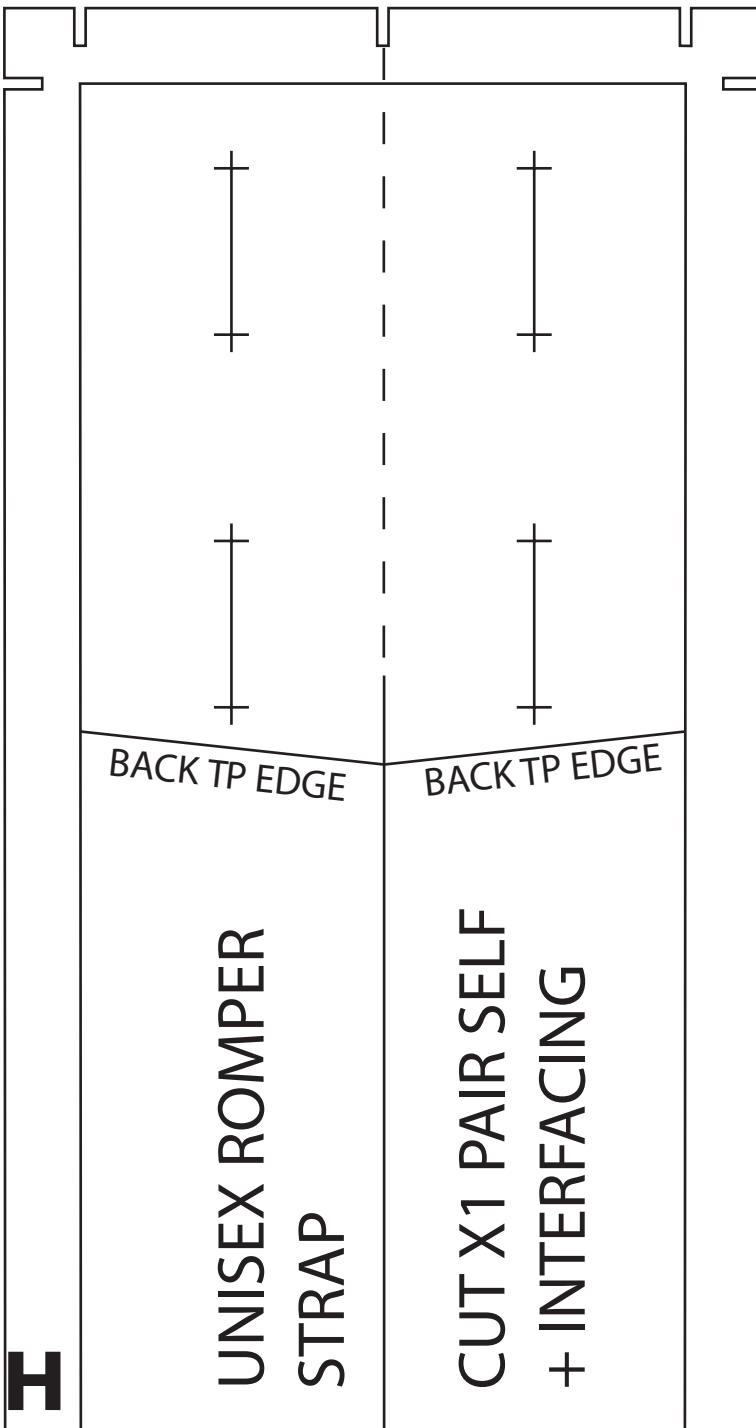


G

15



16



H

17

SHOULDER

SHOULDER

FRONT

FRONT

UNISEX ROMPER
BACK TOP EDGE FACING
CUT X1 SELF